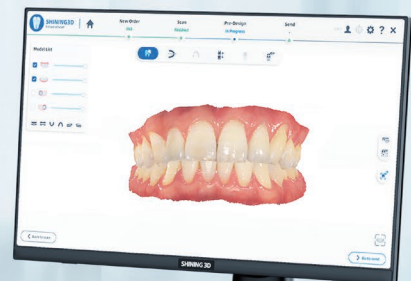
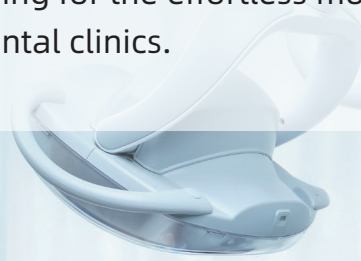


# AoStation

All-in-one Cart

Move Freely In Your Office

The touchscreen all-in-one **AoStation** is available for both SHINING 3D Aoralscan 3 and Aoralscan 3 Wireless intraoral scanner, allowing for the effortless mobile use of intraoral scanners in dental clinics.



### Streamlined Clinic Management

Experience the simplicity of a single cable solution, reducing clutter and enhancing the user-friendliness of your clinic setup. The cart can be easily moved between chairs, reducing the preparation time before use.

### Hassle-Free Integration

Bid farewell to the complexities of computer configurations. Our integrated solution seamlessly merges Aoralscan (including Aoralscan 3 and Aoralscan 3 Wireless) with the cart, eliminating additional technical concerns.



### Effortless Operation

Navigate easily with the intuitive large 23.8" FHD touchscreen, ensuring straightforward and user-friendly interactions. Getting rid of the mouse and keyboard makes it easier for users to operate during the scanning and helps to avoid possible contamination.

### Enhanced Convenience (for Aoralscan 3 Wireless)

The base can charge the scanner and get rid of power anxiety in the use of wireless devices, ensuring that your AoStation is always ready to meet your clinical needs.

### Uninterrupted Power Supply

With a built-in battery backup, you can rely on up to 1 hour of continuous power supply, providing peace of mind during critical procedures.

## TECHNICAL SPECIFICATIONS

Computer Configuration	
CPU	i7-12700 (12 core/25MB/20T/2.10 GHz ~ 4.90 GHz/65W)
RAM	32 GB, 4800 MHz
Hard Drive	M.2 2280, 2 TB, PCIe NVMe x4, SSD
Graphic Card (GPU)	NVIDIA RTX A2000 GDDR6 12GB
Monitor Size	23.8" FHD (Resolution 1920 x 1080)
UPS Parameters	
Input Voltage	220V AC, 50 Hz
Battery Type	Lithium Battery
General Charging Time	8-10 hours
Physical Parameters	
Net Weight (incl. Monitor)	26.5 kg
Overall Dimensions	495 (Length) x 445 (Width) x 1290 (Height) (mm)